



New Bill

Introducing

Health+Tech

10,000 healthier daily steps





Introducing

Health+ech

10,000 healthier daily steps

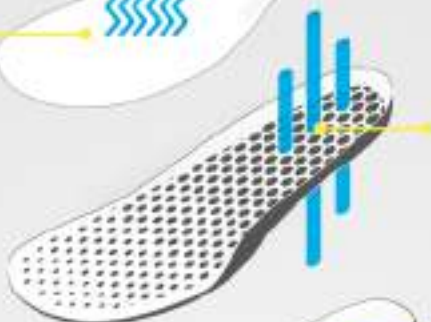
COOLTECH™

This soft technical fabric rapidly gets rid of humidity with quick dissipation and drying properties to help your feet keep dry.



Honeycomb Air system

Insole with honeycomb vents allow air to flow in and out with every step. The insole distributes the pressure of the step to all parts of the foot, providing greater comfort.



XCELL™

This technology, besides providing a soft step cares for your back, knees and joints due to its shock absorbing properties.



Anti-slip outsole

The X-CELL™ and rubber sole, due to its anti-slip properties, provide perfect control on dry and wet surfaces.



Feel the difference!



Introducing

Health+ech

10,000 healthier daily steps



New ALMA

