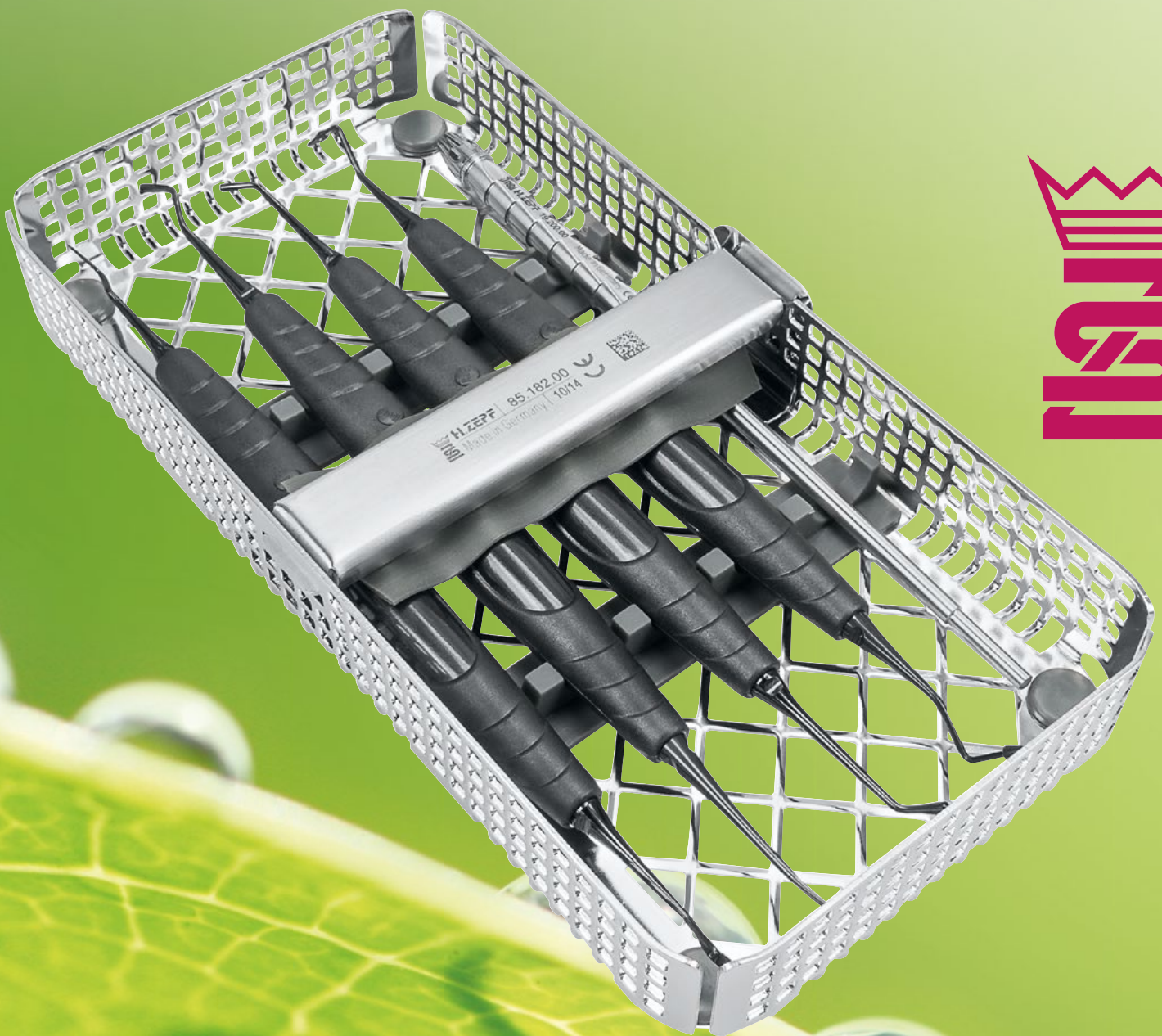




ZEPF | *dental*
newsticker

CompoSMOOTH Composite Set
THE SURFACE IS THE KEY...



CompoSMOOTH

THE SURFACE IS THE KEY...

ZEPF CompoSMOOTH Composite Set

All Composite Tips feature the special **ZEPF onyx^{DESIGN}** coating. The reflection-free **ZEPF onyx^{DESIGN}** coating is extra smooth, harder and more scratch-resistant than conventionally coated composite instruments. The popular handles in the **ZEPF BLONIK** design are made of light-weight, highquality plastic material.



19.201.11



19.201.21



19.201.31

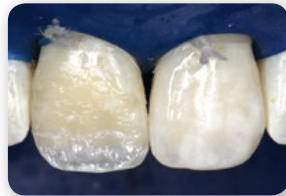


Soft Application Inserts for layering technique for handle 19.200.00
QTY 12 pieces



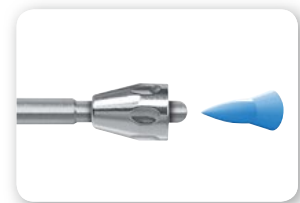
19.202.00

CompoSMOOTH Complete Set in the box incl. Washtray 1/3, with Brush Holder, 3 x 12 Soft Application Inserts and 4 Composite Instruments



19.200.00

CompoSMOOTH
Brush Holder **ZEPF-Line**
with push-out function



push-out function

Re-creating the original tooth as faithfully as possible is a challenging task for the material, the dental technician and the dentist. In case of direct composite restorations, the complete esthetic responsibility lies in the hands of the practitioner. Optimal instruments are the key to success.

The new **CompoSMOOTH**, a special silicone brush, allows an effortless adaptation and modelling of the composite surface before polymerization. Even “sticky” composites can be adapted in an optimal way. The perfect surface morphology is created almost automatically by slight pressure. The tooth shape is modeled in a way that reduces the subsequent polishing work to a minimum... and the result – optimal!



24.751.319Ti



1, Spatula 1.5 mm, small

26.120.10Ti

26.120.122Ti



Spatula 1.8 mm / Beavertail Insert 2.6 mm

26.120.12Ti

24.751.325Ti



Plugger Ø 1.5 mm / Plugger Ø 1.9 mm (pear-shaped)

26.120.25Ti

26.120.322Ti



Fissure Former Ø 1.9 mm / Ø 2.3 mm

26.120.32Ti



Illustration

Article Description

Order Quantity



19.202.00

1 set

CompoSMOOTH Complete Set

by Prof. Dr. Gabriel Krastl
incl. Washtray 1/3 and
Soft Application Inserts in a box



consisting of:



26.120.10Ti

1 piece

1, Spatula 1.5 mm, small



26.120.12Ti

1 piece

Spatula 1.8 mm / Beavertail Insert 2.6 mm



26.120.25Ti

1 piece

Plugger Ø 1.5 mm / Plugger Ø 1.9 mm (pear-shaped)



26.120.32Ti

1 piece

Fissure Former Ø 1.9 mm / Ø 2.3 mm



19.200.00

1 piece

Brush Holder **ZEPF**-Line with push-out function



19.201.11

for Brush Holder

12 pieces

Soft Application Inserts for layering technique



19.201.21

for Brush Holder

12 pieces

Soft Application Inserts for layering technique



19.201.31

for Brush Holder

12 pieces

Soft Application Inserts for layering technique



Curriculum Vitae: Prof. Dr. Gabriel Krastl

Director of the Polyclinic for Dentistry and Periodontology of the University Hospital of Würzburg (Germany)

- **1993 - 1998** Studies of Dental Medicine in Tübingen (Germany)
- **1998 - 2005** Academic Assistant, since 2002 Senior Physician at the Department of Conservative Dentistry, University Hospital of Tübingen
- **2005 - 2014** Senior Physician at the Clinic for Periodontology, Endodontology and Cariology, Basel (Switzerland); Head of the Cariology Group
- **2006 - 2014** Establishment and Management of the Center of Dental Traumatology, Basel, together with Prof. Dr. A. Filippi
- **Since 2014** Director of the Polyclinic for Dentistry and Periodontology of the University Hospital of Würzburg (Germany)

AESTHETIC IS THE RESULT